

Including $\phi 5$ mm close focus type

Infrared Temperature Sensor

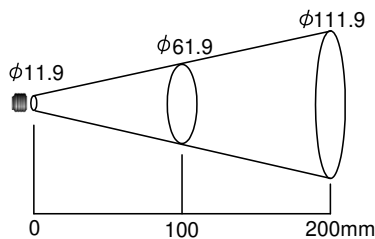
RD-500 SERIES

- Non-contact temperature measurement
- Select from a versatile lineup
- Temperature range: 0 to 250 °C, 0 to 500 °C
- Close focus type for pinpoint measurement
- All with the same dimensions
- CE marking acquired

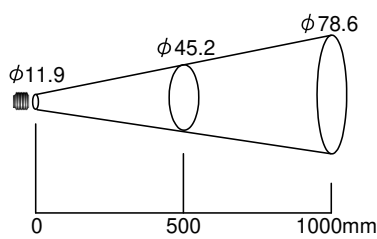


■ Target Spot Size versus Distance from Sensing Head

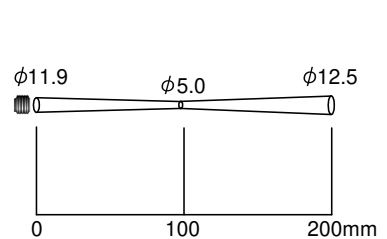
RD-502-M0 (Field of view 2:1)



RD-515-□0 (Field of view 15:1)



RD-5CF-H0 (Close focus)



Shinko

■ Model

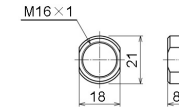
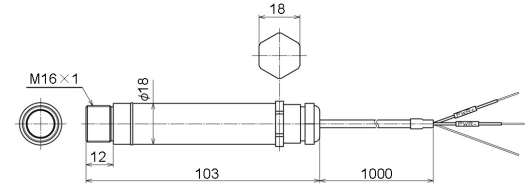
Field of View		Model	Temperature Range	Output
Field of view	2:1	RD-502-M0	0 to 250 °C	Current: 4 to 20 mA DC (2-wire type)
	15:1	RD-515-M0	0 to 250 °C	
		RD-515-H0	0 to 500 °C	
Close focus type		RD-5CF-H0	0 to 500 °C	

■ Standard Specifications

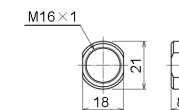
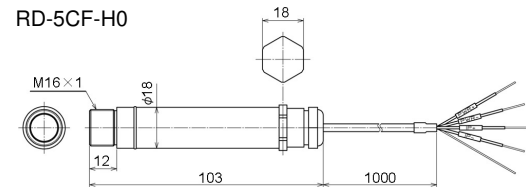
Accuracy	±1 % of reading or ±1 °C, whichever is greater
Repeatability	±0.5 % of reading or ±0.5 °C, whichever is greater
Emissivity	Fixed at 0.95 0.200 to 1.000 [When the digital indicating controller (ACS-13A-□/A) is used]
Response Time	240 ms (90 % response)
Spectral Range	8 to 14 μm
Max. Load Resistance	900 Ω (Current output) (when power supply is 24 V DC)
Supply Voltage	24 V DC (Max. 28 V DC), 25 mA
Ambient Temperature	0 to 70 °C
Ambient Humidity	Max. 95 %RH (non-condensing)
Dimensions	φ18 x 103 mm (Diameter x Length)
Weight	Approx. 100 g (including cable)
Material	Stainless steel SUS304
Mounting	Fixed using a mounting bracket (sold separately)
Drip-proof/Dust-proof	IP65
Cable Length	1 m

■ External Dimensions (Scale: mm)

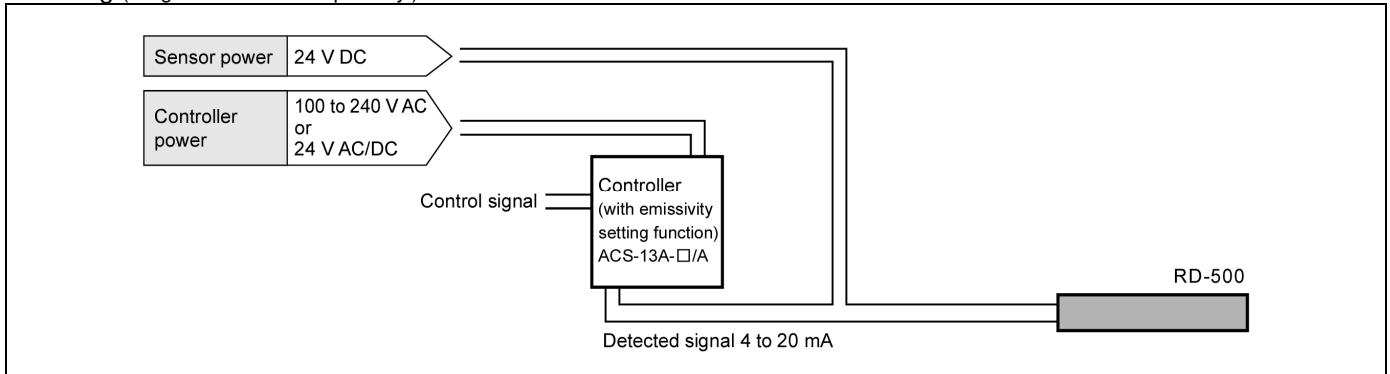
RD-502-M0, RD-515-M0, RD-515-H0



RD-5CF-H0



■ Wiring (Diagram shows example only.)



Close focus type (RD-5CF-H0) is 4-wire type, but 2 wires are not used.)

■ Accessories Sold Separately

<p>Fixed mounting bracket (FBS)</p>	<p>Adjustable mounting bracket (ABS)</p>	<p>Air purge collar (For RD-502) (APSW)</p>	<p>Air purge collar (For RD-515, RD-5CF) (APSN)</p>	<p>24 V power supply for RD-500, RD-600 (RDP-24)</p>	<p>Digital indicating controller (with emissivity setting function) (ACS-13A-□/A)</p>
-------------------------------------	--	---	---	--	---

SHINKO TECHNOS CO., LTD.
OVERSEAS DIVISION

Head Office : 2-5-1, Senbahigashi, Minoo, Osaka, Japan

URL: <http://www.shinko-technos.co.jp/e/>

E-mail: overseas@shinko-technos.co.jp

Tel : +81-72-727-6100

Fax: +81-72-727-7006